

**Type:** Data Dictionary Change Notice  
**Reference:** 1779  
**Version No:** 1.0  
**Subject:** Retirement of Information Sharing to Tackle Violence Minimum Data Set  
**Effective Date:** Immediate  
**Reason for Change:** Retirement of out of date content  
**Publication Date:** 7 September 2020

## Background:

As part of the ongoing work to implement a new version of the NHS Data Model and Dictionary, a review of legacy and out of date data sets contained within the NHS Data Model and Dictionary has been carried out.

A number of data sets are out of date and have been identified for retirement from the NHS Data Model and Dictionary. However, it must be noted that the Information Standard still remains and these records should be submitted as required.

This Data Dictionary Change Notice (DDCN) retires the Information Sharing to Tackle Violence Minimum Data Set and supporting definitions from the NHS Data Model and Dictionary only.

The data element ASSAULT LOCATION DESCRIPTION is retained for future use in the Emergency Care Data Set (ECDS).

To view a demonstration on "How to Read an NHS Data Model and Dictionary Change Request", visit the NHS Data Model and Dictionary help pages at: [https://www.datadictionary.nhs.uk/Flash\\_Files/changerequest.htm](https://www.datadictionary.nhs.uk/Flash_Files/changerequest.htm).

Note: if the web page does not open, please copy the link and paste into the web browser.

## Summary of changes:

### Diagrams

[ADDRESS DIAGRAM](#) Changed Diagram

### Data Set

[INFORMATION SHARING TO TACKLE VIOLENCE MINIMUM DATA SET \(RETIRED\)](#) renamed from [INFORMATION SHARING TO TACKLE VIOLENCE MINIMUM DATA SET](#) Changed Name, status to Retired, Description

### Supporting Information

[INFORMATION SHARING TO TACKLE VIOLENCE MINIMUM DATA SET OVERVIEW \(RETIRED\)](#) renamed from [INFORMATION SHARING TO TACKLE VIOLENCE MINIMUM DATA SET OVERVIEW](#) Changed Name, status to Retired, Description

[SUPPORTING DATA SETS MENU](#) Changed Description

[SUPPORTING DATA SETS MESSAGE DOCUMENTATION](#) Changed Description

[SUPPORTING DATA SETS MESSAGE DOCUMENTATION MENU](#) Changed Description

[XML SCHEMA TRUD DOWNLOAD](#) Changed Description

### Class Definitions

[ASSAULT \(RETIRED\)](#) renamed from [ASSAULT](#) Changed Attributes, Supertype, Name, status to Retired, Description

[LOCATION](#) Changed Attributes

[PERSON](#) Changed Relationships

[PERSON PROPERTY](#) Changed Description

### Attribute Definitions

[ASSAULT LOCATION TYPE \(RETIRED\)](#) renamed from [ASSAULT LOCATION TYPE](#) Changed Name, status to Retired, Description

[ASSAULT METHOD \(RETIRED\)](#) renamed from [ASSAULT METHOD](#) Changed Name, status to Retired, Description

### Data Elements

[ARRIVAL DATE AND TIME AT ACCIDENT AND EMERGENCY DEPARTMENT \(RETIRED\)](#) renamed from [ARRIVAL DATE AND TIME AT ACCIDENT AND EMERGENCY DEPARTMENT](#) Changed Name, status to Retired, linked Attribute, Description

[ASSAULT DATE AND TIME \(RETIRED\)](#) renamed from [ASSAULT DATE AND TIME](#) Changed Name, status to Retired, linked Attribute, Description

[ASSAULT LOCATION TYPE \(RETIRED\)](#) renamed from [ASSAULT LOCATION TYPE](#)

[ASSAULT METHOD \(RETIRED\)](#) renamed from [ASSAULT METHOD](#)

Changed Name, status to Retired, linked Attribute, Description

Changed Name, status to Retired, linked Attribute, Description

[ASSAULT METHOD OTHER DESCRIPTION \(RETIRED\)](#) renamed from [ASSAULT METHOD OTHER DESCRIPTION](#)

Changed Name, status to Retired, linked Attribute, Description

**XML Schema Constraint**

[INFORMATION SHARING TO TACKLE VIOLENCE DATA SET XML SCHEMA CONSTRAINTS \(RETIRED\)](#) renamed from [INFORMATION SHARING TO TACKLE VIOLENCE DATA SET XML SCHEMA CONSTRAINTS](#)

Changed Name, status to Retired, Description

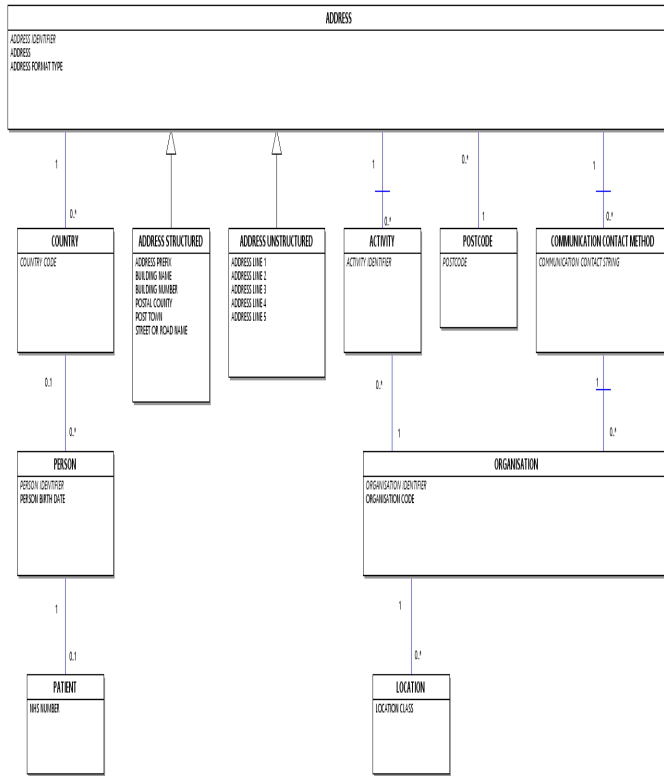
**Date:** 7 September 2020

**Sponsor:** Nicholas Oughtibridge, Head of Clinical Data Architecture, NHS Digital

**Note:** New text is shown with a blue background. Deleted text is crossed out. Retired text is shown in grey. Within the Diagrams deleted classes and relationships are red, changed items are blue and new items are green.

**ADDRESS DIAGRAM**

Change to Diagram: Changed Diagram



**INFORMATION SHARING TO TACKLE VIOLENCE MINIMUM DATA SET (RETIRED), renamed from INFORMATION SHARING TO TACKLE VIOLENCE MINIMUM DATA SET**

Change to Data Set: Changed Name, status to Retired, Description

[Information Sharing to Tackle Violence Minimum Data Set Overview](#) This item has been retired from the NHS Data Model and Dictionary.

The Mandatory or Required (M/R) column indicates the recommendation for the inclusion of data. The last live version of this item is available in the August 2020 release of the NHS Data Model and Dictionary.

- M = Mandatory: this data element is mandatory and the technical process (e.g. submission of the data set, production of output etc) cannot be completed without this data element being present
- R = Required: NHS business processes cannot be delivered without this data element

Note: An XML Schema which supports submission of the [Information Sharing to Tackle Violence](#) has been produced but does not form part of the requirements of the approved Information Standard. Contact the [Community Safety Partnership](#) before submitting using the XML Schema. Access to this version can be obtained by emailing [information.standards@nhs.net](mailto:information.standards@nhs.net) with "NHS Data Model and Dictionary - Archive Request" in the email subject line.

For guidance on downloading the XML Schema, see [XML Schema TRUD Download](#).

For guidance on the XML Schema constraints, see the [Information Sharing to Tackle Violence Data Set XML Schema Constraints](#).

SUBMISSION HEADER	
To carry the submission header details. One occurrence of this group is required.	
M/R	Data-Set-Data-Elements
M	<a href="#">REPORTING PERIOD START DATE</a>
M	<a href="#">REPORTING PERIOD END DATE</a>
M	<a href="#">SITE CODE (OF TREATMENT)</a>
ASSAULT	
To carry details of the assault. One occurrence of this group is required (multiple occurrences may be submitted).	
M/R	Data-Set-Data-Elements
R	<a href="#">ARRIVAL DATE AND TIME AT ACCIDENT AND EMERGENCY DEPARTMENT</a>
M	<a href="#">ASSAULT DATE AND TIME</a>

M	<a href="#">ASSAULT METHOD</a>
R	<a href="#">ASSAULT METHOD OTHER DESCRIPTION</a>
M	<a href="#">ASSAULT LOCATION TYPE</a>
R	<a href="#">ASSAULT LOCATION DESCRIPTION</a>

**INFORMATION SHARING TO TACKLE VIOLENCE MINIMUM DATA SET (RETIRED), renamed from INFORMATION SHARING TO TACKLE VIOLENCE MINIMUM DATA SET**

Change to Data Set: Changed Name, status to Retired, Description

- Changed Name from Data\_Dictionary.Messages.Supporting\_Data\_Sets.Data\_Sets.Information\_Sharing\_to\_Tackle\_Violence\_Minimum\_Data\_Set to Retired.Data\_Dictionary.Messages.Supporting\_Data\_Sets.Information\_Sharing\_to\_Tackle\_Violence\_Minimum\_Data\_Set
- Retired Information Sharing to Tackle Violence Minimum Data Set
- Changed Description

**INFORMATION SHARING TO TACKLE VIOLENCE MINIMUM DATA SET OVERVIEW (RETIRED), renamed from INFORMATION SHARING TO TACKLE VIOLENCE MINIMUM DATA SET OVERVIEW**

Change to Supporting Information: Changed Name, status to Retired, Description

The purpose of the [Information Sharing to Tackle Violence Minimum Data Set](#) is to enable the collection of anonymised information on those [PATIENTS](#) presenting at [Accident and Emergency Departments](#) for treatment as a result of a violent assault. This information is to be shared with [Community Safety Partnerships](#) (formerly known as Crime and Disorder Reduction Partnerships in England) to reduce community violence. **This item has been retired from the NHS Data Model and Dictionary.**

The requirement for [ACCIDENT AND EMERGENCY DEPARTMENT TYPE '01'](#) to collect the [Information Sharing to Tackle Violence Minimum Data Set](#) is considered **mandatory**. The last live version of this item is available in the August 2020 release of the NHS Data Model and Dictionary.

The requirement for [ACCIDENT AND EMERGENCY DEPARTMENT TYPE '02', '03' and '04'](#) to collect the [Information Sharing to Tackle Violence Minimum Data Set](#) is considered **optional**. Access to this version can be obtained by emailing [information.standards@nhs.net](mailto:information.standards@nhs.net) with "NHS Data Model and Dictionary - Archive Request" in the email subject line.

The frequency of reporting the [Information Sharing to Tackle Violence Minimum Data Set](#) should be determined locally, but must be at least monthly.

**Submission Information:**

The [Information Sharing to Tackle Violence Minimum Data Set](#) is submitted to a [Community Safety Partnership](#) using the Information Sharing to Tackle Violence XML Schema.

The XML Schema and Release Notes are available as a downloadable zip file from [Technology Reference Data Update Distribution \(TRUD\)](#) at: [NHS Data Model and Dictionary: DD XML Schemas](#).

Contact the [Community Safety Partnership](#) before submitting using the XML Schema.

**INFORMATION SHARING TO TACKLE VIOLENCE MINIMUM DATA SET OVERVIEW (RETIRED), renamed from INFORMATION SHARING TO TACKLE VIOLENCE MINIMUM DATA SET OVERVIEW**

Change to Supporting Information: Changed Name, status to Retired, Description

- Changed Name from Data\_Dictionary.Messages.Supporting\_Data\_Sets.Overviews.Information\_Sharing\_to\_Tackle\_Violence\_Minimum\_Data\_Set\_Overview to Retired.Data\_Dictionary.Messages.Supporting\_Data\_Sets.Information\_Sharing\_to\_Tackle\_Violence\_Minimum\_Data\_Set\_Overview
- Retired Information Sharing to Tackle Violence Minimum Data Set Overview
- Changed Description

**SUPPORTING DATA SETS MENU**

Change to Supporting Information: Changed Description

- [Message Documentation](#)

**Contract Monitoring:**

- [Aggregate Contract Monitoring](#)
- [Devices Patient Level Contract Monitoring](#)
- [Drugs Patient Level Contract Monitoring](#)
- [Patient Level Contract Monitoring](#)

**Critical Care:**

- [Critical Care](#)
- [Neonatal Critical Care](#)
- [Paediatric Critical Care](#)

**Other:**

- [Information Sharing to Tackle Violence](#)
- [NHS Continuing Healthcare Patient Level](#)

**Patient Level Information Costing:**

- [Reconciliation](#)
- [Acute Admitted Patient Care](#)
- [Acute Emergency Care](#)
- [Acute Out-Patient Care](#)
- [Specialist Ward Care](#)
- [Supplementary Information](#)
- Ambulance
- Improving Access to Psychological Therapies
- Mental Health

---

**SUPPORTING DATA SETS MESSAGE DOCUMENTATION**

---

Change to Supporting Information: Changed Description

**XML Schema Download:**

- [XML Schema TRUD Download](#)

**XML Schema Constraints:**

- [Information Sharing to Tackle Violence Data Set XML Schema Constraints](#)

**Data Set Constraints:**

- [Devices Patient Level Contract Monitoring Data Set Constraints](#)
- [Drugs Patient Level Contract Monitoring Data Set Constraints](#)
- [Patient Level Contract Monitoring Data Set Constraints](#)
- [PLICS Acute Admitted Patient Care Data Set Constraints](#)
- [PLICS Acute Emergency Care Data Set Constraints](#)
- [PLICS Acute Out-Patient Care Data Set Constraints](#)
- [PLICS Reconciliation Data Set Constraints](#)
- [PLICS Acute Specialist Ward Care Data Set Constraints](#)
- [PLICS Acute Supplementary Information Data Set Constraints](#)

---

**SUPPORTING DATA SETS MESSAGE DOCUMENTATION MENU**

---

Change to Supporting Information: Changed Description

[Supporting Data Sets](#)

**XML Schema Download:**

- [XML Schema TRUD Download](#)

**XML Schema Constraints:**

- [Information Sharing to Tackle Violence](#)

**Data Set Constraints:**

- [Devices Patient Level Contract Monitoring](#)
- [Drugs Patient Level Contract Monitoring](#)
- [Patient Level Contract Monitoring](#)
- [PLICS Acute Admitted Patient Care](#)
- [PLICS Acute Emergency Care](#)
- [PLICS Acute Out-Patient Care](#)
- [PLICS Reconciliation](#)
- [PLICS Acute Specialist Ward Care](#)
- [PLICS Acute Supplementary Information](#)

---

**XML SCHEMA TRUD DOWNLOAD**

---

Change to Supporting Information: Changed Description

**Background:**

XML Schemas and Release Notes can be downloaded from [Technology Reference Data Update Distribution \(TRUD\)](#).

In order to access the XML Schemas and Release Notes on [Technology Reference Data Update Distribution \(TRUD\)](#), users will be required to:

- Create a [TRUD](#) account at: [TRUD: Account Creation](#) (if an account does not currently exist. This only has to be done once to access any XML Schema)
- Log into [TRUD](#) at: [TRUD: Log in](#)
- Access [NHS Data Model and Dictionary: DD XML Schemas](#) and subscribe to the XML Schema to be downloaded
- Accept the licence and request the subscription (an email will be sent immediately to confirm that the request has been accepted and the files can be downloaded, which avoids any delays)
- Once the "Subscription accepted" email has been received, download the zip file from [NHS Data Model and Dictionary: DD XML Schemas](#).

Once an XML Schema has been added to [TRUD](#), users who have subscribed to that item will be automatically notified by email of any updates to that area, for example, new versions, retirements etc.

#### XML Schema Download:

XML Schemas and Release Notes for the following Data Sets in the NHS Data Model and Dictionary can be downloaded from [Technology Reference Data Update Distribution \(TRUD\)](#) at: [NHS Data Model and Dictionary: DD XML Schemas](#).

- [Cancer Outcomes and Services Data Set \(COSDS\)](#)
- [Community Services Data Set \(CSDS\)](#)
- [Commissioning Data Set \(CDS\) V6-2](#)
- [Commissioning Data Set \(CDS\) V6-2-1](#)
- [Commissioning Data Set \(CDS\) V6-2-2](#)
- [CDS V6-2-2 Type 011 - Emergency Care Commissioning Data Set](#)
- [Diagnostic Imaging Data Set \(DIDS\)](#)
- [HIV and AIDS Reporting Data Set \(HARS\)](#)
- [Information Sharing to Tackle Violence Minimum Data Set \(ISTVDS\)](#)
- [Maternity Services Data Set \(MSDS\)](#)
- [National Cancer Waiting Times Monitoring Data Set \(NCWTMS\)](#)

For supplementary information on the XML Schema Publication and Download, see the [NHS Data Model and Dictionary Service](#) part of the [NHS Digital](#) website at: [Policies: XML Schema Publication and Download guidance](#).

---

#### ASSAULT (RETIRED)\_ renamed from ASSAULT

---

Change to Class: Changed Attributes, Supertype, Name, status to Retired, Description

Observations regarding an assault on a [PERSON](#). **This item has been retired from the NHS Data Model and Dictionary.**

**The last live version of this item is available in the August 2020 release of the NHS Data Model and Dictionary.**

**Access to this version can be obtained by emailing [information.standards@nhs.net](mailto:information.standards@nhs.net) with "NHS Data Model and Dictionary - Archive Request" in the email subject line.**

---

#### ASSAULT (RETIRED)\_ renamed from ASSAULT

---

Change to Class: Changed Attributes, Supertype, Name, status to Retired, Description

*Attributes of this Class are:*

ASSAULT.METHOD

*This class has no attributes.*

---

#### ASSAULT (RETIRED)\_ renamed from ASSAULT

---

Change to Class: Changed Attributes, Supertype, Name, status to Retired, Description

- Changed Attributes
- Changed Supertype from Data\_Dictionary.Classes.P.PERSON\_PROPERTY to null
- Changed Name from Data\_Dictionary.Classes.A.ASSAULT to Retired.Data\_Dictionary.Classes.A.ASSAULT
- Retired ASSAULT
- Changed Description

---

#### LOCATION

---

Change to Class: Changed Attributes

*Attributes of this Class are:*

ACCIDENT AND EMERGENCY INCIDENT LOCATION TYPE  
 ACTIVITY LOCATION TYPE CODE  
 ACUTE ONCOLOGY ASSESSMENT LOCATION  
 ASSAULT LOCATION TYPE  
 LOCATION CLASS  
 LOCATION IN HOSPITAL TYPE  
 LOCATION OF HIGHEST LEVEL OF CARE  
 PATIENT LOCATION FOR NHS CONTINUING HEALTHCARE CHECKLIST  
 PLACE OF SAFETY INDICATOR

---

## PERSON

---

Change to Class: Changed Relationships

Each PERSON

- must be the user of one or more PERSON NAME
- must be the owner of one or more PERSON ORGAN
- ~~may be the subject of one or more ASSAULT~~
- may be required to complete one or more ASSESSMENT TOOL
- may be registered as one and only one CARE PROFESSIONAL
- may be contacted via one or more COMMUNICATION CONTACT METHOD
- may be born in one and only one COUNTRY
- may be the subject of one or more DATE TIME
- may be classified by one or more EDUCATION
- may be recorded as one or more EMPLOYEE
- may be classified by one or more EMPLOYMENT
- may be acting as one or more ORGAN OR TISSUE DONOR
- may be registered as one and only one PATIENT
- may be the subject of one or more PERSON DEATH DETAILS
- may be the reporter of one or more PERSON PROPERTY
- may be the recorder of one or more PERSON PROPERTY
- may be the owner of one or more PERSON PROPERTY
- may be the observer of one or more PERSON PROPERTY
- may be the second party in one or more PERSON RELATIONSHIP
- may be the first party in one or more PERSON RELATIONSHIP
- may be holder of one or more PROFESSIONAL REGISTRATION
- may be awarded one or more QUALIFICATION
- may be the recipient of one or more TISSUE TRANSPLANT

---

## PERSON PROPERTY

---

Change to Class: Changed Description

A [PERSON PROPERTY](#) is a condition or state associated with a [PERSON](#).

[PERSON PROPERTIES](#) are collected as a result of an [ACTIVITY](#).

[PERSON PROPERTIES](#) for a [PATIENT](#) do not include information about performing a treatment or intervention.

- The [PERSON PROPERTY](#) may be a clinical diagnosis
- The observer of a [PERSON PROPERTY](#) may be any [PERSON](#)
- [PERSON PROPERTIES](#) may be recorded during, or as a result of, a course of treatment.

Subtypes of [PERSON PROPERTY](#) include:

- [ASSAULT](#)
- [CANCER STAGING](#)
- [CATEGORY VALUED PERSON OBSERVATION](#)
- [EDUCATION](#)
- [EDUCATIONAL ASSESSMENT](#)
- [OTHER PERSON OBSERVATION](#)
- [PATIENT DIAGNOSIS](#)
- [PERSON SCORE](#)
- [SAFEGUARDING CHILDREN OBSERVATION](#)
- [TEXT VALUED PERSON OBSERVATION](#)
- [TOBACCO USAGE](#).

---

## ASSAULT LOCATION TYPE (RETIRED), renamed from ASSAULT LOCATION TYPE

---

Change to Attribute: Changed Name, status to Retired, Description

The type of [LOCATION](#) where an assault took place. **This item has been retired from the NHS Data Model and Dictionary.**

Where National Code 'Home or Private Address' is recorded, the [ASSAULT LOCATION DESCRIPTION](#) must NOT be completed, as this could identify the [PATIENT](#). **The last live version of this item is available in the August 2020 release of the NHS Data Model and Dictionary.**

**National Codes: Access to this version can be obtained by emailing [information.standards@nhs.net](mailto:information.standards@nhs.net) with "NHS Data Model and Dictionary - Archive Request" in the email subject line.**

- 01 Home or Private Address
- 02 Other location (specify)

---

ASSAULT LOCATION TYPE (RETIRED), renamed from ASSAULT LOCATION TYPE

---

Change to Attribute: Changed Name, status to Retired, Description

- Changed Name from Data\_Dictionary.Attributes.A.Ar.ASSAULT\_LOCATION\_TYPE to Retired.Data\_Dictionary.Attributes.A.ASSAULT\_LOCATION\_TYPE
  - Retired ASSAULT LOCATION TYPE
  - Changed Description
- 

ASSAULT METHOD (RETIRED), renamed from ASSAULT METHOD

---

Change to Attribute: Changed Name, status to Retired, Description

The weapon or body part used in an assault. **This item has been retired from the NHS Data Model and Dictionary.**

Where National Codes 'Other (specify)', 'Other bladed or sharp object (specify)', 'Any blunt object (specify)', or 'Other weapon (specify)' are recorded, additional detail may be given in [ASSAULT METHOD OTHER DESCRIPTION](#). The last live version of this item is available in the August 2020 release of the NHS Data Model and Dictionary.

National Codes: Access to this version can be obtained by emailing [information.standards@nhs.net](mailto:information.standards@nhs.net) with "NHS Data Model and Dictionary - Archive Request" in the email subject line.

	<b>Body Part</b>
01	Fist
02	Foot
03	Head
04	Other (specify)
05	Combination of body parts
06	Pushed
	<b>Weapon</b>
10	Glass
11	Bottle
12	Knife
13	Other bladed or sharp object (specify)
14	Any blunt object (specify)
15	Firearm
16	Explosive
17	Other weapon (specify)
	<b>Other</b>
23	<a href="#">PATIENT</a> asked but does not know/refuses to say
24	Unknown (e.g. unable to collect data as <a href="#">PATIENT</a> died)

---

ASSAULT METHOD (RETIRED), renamed from ASSAULT METHOD

---

Change to Attribute: Changed Name, status to Retired, Description

- Changed Name from Data\_Dictionary.Attributes.A.Ar.ASSAULT\_METHOD to Retired.Data\_Dictionary.Attributes.A.ASSAULT\_METHOD
  - Retired ASSAULT METHOD
  - Changed Description
- 

ARRIVAL DATE AND TIME AT ACCIDENT AND EMERGENCY DEPARTMENT (RETIRED), renamed from ARRIVAL DATE AND TIME AT ACCIDENT AND EMERGENCY DEPARTMENT

---

Change to Data Element: Changed Name, status to Retired, linked Attribute, Description

Format/Length:	an10 YYYY MM DDThh:mm:ss
National Codes:	
Default Codes:	

---

**Notes:**

[ARRIVAL DATE AND TIME AT ACCIDENT AND EMERGENCY DEPARTMENT](#) is the same as attribute [ACTIVITY DATE](#) and [ACTIVITY TIME](#) where the [ACTIVITY DATE TYPE](#) and [ACTIVITY TIME TYPE](#) is National Code 'Arrival Date At Accident and Emergency Department' and 'Arrival Time At Accident and Emergency Department'. **This item has been retired from the NHS Data Model and Dictionary.**

**The last live version of this item is available in the August 2020 release of the NHS Data Model and Dictionary.**

Access to this version can be obtained by emailing [information.standards@nhs.net](mailto:information.standards@nhs.net) with "NHS Data Model and Dictionary - Archive Request" in the email subject line.

---



ARRIVAL DATE AND TIME AT ACCIDENT AND EMERGENCY DEPARTMENT (RETIRED)\_ renamed from ARRIVAL DATE AND TIME AT ACCIDENT AND EMERGENCY DEPARTMENT

Change to Data Element: Changed Name, status to Retired, linked Attribute, Description

**ARRIVAL DATE AND TIME AT ACCIDENT AND EMERGENCY DEPARTMENT**

Attribute:

<a href="#">ACTIVITY DATE</a>
<a href="#">ACTIVITY TIME</a>

ARRIVAL DATE AND TIME AT ACCIDENT AND EMERGENCY DEPARTMENT (RETIRED)\_ renamed from ARRIVAL DATE AND TIME AT ACCIDENT AND EMERGENCY DEPARTMENT

Change to Data Element: Changed Name, status to Retired, linked Attribute, Description

- Changed Name from Data\_Dictionary.Data\_Field\_Notes.A.Ap.ARRIVAL\_DATE\_AND\_TIME\_AT\_ACCIDENT\_AND\_EMERGENCY\_DEPARTMENT to Retired.Data\_Dictionary.Data\_Field\_Notes.A.ARRIVAL\_DATE\_AND\_TIME\_AT\_ACCIDENT\_AND\_EMERGENCY\_DEPARTMENT
- Retired ARRIVAL DATE AND TIME AT ACCIDENT AND EMERGENCY DEPARTMENT
- null
- Changed Description

ASSAULT DATE AND TIME (RETIRED)\_ renamed from ASSAULT DATE AND TIME

Change to Data Element: Changed Name, status to Retired, linked Attribute, Description

Format/Length:	an10-YYYY MM-DDThh:mm:ss
National Codes:	
Default Codes:	

Notes:

[ASSAULT DATE AND TIME](#) is the same as attribute [PERSON PROPERTY EFFECTIVE START DATE](#) and [PERSON PROPERTY EFFECTIVE START TIME](#).

[ASSAULT DATE AND TIME](#) is the date and time the [PATIENT](#) was assaulted. This item has been retired from the NHS Data Model and Dictionary.

The last live version of this item is available in the August 2020 release of the NHS Data Model and Dictionary.

Access to this version can be obtained by emailing [information.standards@nhs.net](mailto:information.standards@nhs.net) with "NHS Data Model and Dictionary - Archive Request" in the email subject line.

ASSAULT DATE AND TIME (RETIRED)\_ renamed from ASSAULT DATE AND TIME

Change to Data Element: Changed Name, status to Retired, linked Attribute, Description

**ASSAULT DATE AND TIME**

Attribute:

<a href="#">PERSON PROPERTY EFFECTIVE START DATE</a>
<a href="#">PERSON PROPERTY EFFECTIVE START TIME</a>

ASSAULT DATE AND TIME (RETIRED)\_ renamed from ASSAULT DATE AND TIME

Change to Data Element: Changed Name, status to Retired, linked Attribute, Description

- Changed Name from Data\_Dictionary.Data\_Field\_Notes.A.As.ASSAULT\_DATE\_AND\_TIME to Retired.Data\_Dictionary.Data\_Field\_Notes.A.ASSAULT\_DATE\_AND\_TIME
- Retired ASSAULT DATE AND TIME
- null
- Changed Description

ASSAULT LOCATION TYPE (RETIRED)\_ renamed from ASSAULT LOCATION TYPE

Change to Data Element: Changed Name, status to Retired, linked Attribute, Description

Format/Length:	a2
National Codes:	see <a href="#">ASSAULT LOCATION TYPE</a>
Default Codes:	

Notes:

[ASSAULT LOCATION TYPE](#) is the same as attribute [ASSAULT LOCATION TYPE](#). This item has been retired from the NHS Data Model and Dictionary.

The last live version of this item is available in the August 2020 release of the NHS Data Model and Dictionary.

Access to this version can be obtained by emailing [information.standards@nhs.net](mailto:information.standards@nhs.net) with "NHS Data Model and Dictionary - Archive Request" in the email subject line.

---

ASSAULT LOCATION TYPE (RETIRED), renamed from ASSAULT LOCATION TYPE

Change to Data Element: Changed Name, status to Retired, linked Attribute, Description

### ASSAULT LOCATION TYPE

Attribute:

[ASSAULT LOCATION TYPE](#)

---

ASSAULT LOCATION TYPE (RETIRED), renamed from ASSAULT LOCATION TYPE

Change to Data Element: Changed Name, status to Retired, linked Attribute, Description

- Changed Name from Data\_Dictionary.Data\_Field\_Notes.A.As.ASSAULT\_LOCATION\_TYPE to Retired.Data\_Dictionary.Data\_Field\_Notes.A.ASSAULT\_LOCATION\_TYPE
- Retired ASSAULT LOCATION TYPE
- null
- Changed Description

---

ASSAULT METHOD (RETIRED), renamed from ASSAULT METHOD

Change to Data Element: Changed Name, status to Retired, linked Attribute, Description

Format/Length:	an2
National Codes:	See <a href="#">ASSAULT METHOD</a>
Default Codes:	

Notes:

[ASSAULT METHOD](#) is the same as attribute [ASSAULT METHOD](#). This item has been retired from the NHS Data Model and Dictionary.

The last live version of this item is available in the August 2020 release of the NHS Data Model and Dictionary.

Access to this version can be obtained by emailing [information.standards@nhs.net](mailto:information.standards@nhs.net) with "NHS Data Model and Dictionary - Archive Request" in the email subject line.

---

ASSAULT METHOD (RETIRED), renamed from ASSAULT METHOD

Change to Data Element: Changed Name, status to Retired, linked Attribute, Description

### ASSAULT METHOD

Attribute:

[ASSAULT METHOD](#)

---

ASSAULT METHOD (RETIRED), renamed from ASSAULT METHOD

Change to Data Element: Changed Name, status to Retired, linked Attribute, Description

- Changed Name from Data\_Dictionary.Data\_Field\_Notes.A.As.ASSAULT\_METHOD to Retired.Data\_Dictionary.Data\_Field\_Notes.A.ASSAULT\_METHOD
- Retired ASSAULT METHOD
- null
- Changed Description

---

ASSAULT METHOD OTHER DESCRIPTION (RETIRED), renamed from ASSAULT METHOD OTHER DESCRIPTION

Change to Data Element: Changed Name, status to Retired, linked Attribute, Description

Format/Length:	max-an255
National Codes:	
Default Codes:	

Notes:

[ASSAULT METHOD OTHER DESCRIPTION](#) is the same as attribute [PERSON OBSERVATION TEXT STRING](#).

[ASSAULT METHOD OTHER DESCRIPTION](#) provides further comment and/or details where [ASSAULT METHOD](#) National Codes are 'Other (specify)', 'Other bladed or sharp object (specify)', 'Any blunt object (specify)', or 'Other weapon (specify)'. This item has been retired from the NHS Data Model and Dictionary.

The last live version of this item is available in the August 2020 release of the NHS Data Model and Dictionary.

Access to this version can be obtained by emailing [information.standards@nhs.net](mailto:information.standards@nhs.net) with "NHS Data Model and Dictionary - Archive Request" in the email subject line.

ASSAULT METHOD OTHER DESCRIPTION (RETIRED), renamed from ASSAULT METHOD OTHER DESCRIPTION

Change to Data Element: Changed Name, status to Retired, linked Attribute, Description

**ASSAULT METHOD OTHER DESCRIPTION**

Attribute:

[PERSON OBSERVATION TEXT STRING](#)

ASSAULT METHOD OTHER DESCRIPTION (RETIRED), renamed from ASSAULT METHOD OTHER DESCRIPTION

Change to Data Element: Changed Name, status to Retired, linked Attribute, Description

- Changed Name from Data\_Dictionary.Data\_Field\_Notes.A.As.ASSAULT\_METHOD\_OTHER\_DESCRIPTION to Retired.Data\_Dictionary.Data\_Field\_Notes.A.ASSAULT\_METHOD\_OTHER\_DESCRIPTION
- Retired ASSAULT METHOD OTHER DESCRIPTION
- null
- Changed Description

INFORMATION SHARING TO TACKLE VIOLENCE DATA SET XML SCHEMA CONSTRAINTS (RETIRED), renamed from INFORMATION SHARING TO TACKLE VIOLENCE DATA SET XML SCHEMA CONSTRAINTS

Change to XML Schema Constraint: Changed Name, status to Retired, Description

XML Schema constraints applied to the [Information Sharing to Tackle Violence Minimum Data Set](#). This item has been retired from the NHS Data Model and Dictionary.

The "Allowed Values" column indicates the NHS Data Model and Dictionary National Codes and Default Codes present in the XML Schema: **The last live version of this item is available in the August 2020 release of the NHS Data Model and Dictionary.**

- Removed – The National Codes and Default Codes are not included in the XML Schema

Data Element	XML Schema Format/Length	Allowed Values	Range	Pattern Match	Reason / Comment / XML Choice
<a href="#">SITE CODE (OF TREATMENT)</a>	min-an3-max-an12	Removed  Access to this version can be obtained by emailing <a href="mailto:information.standards@nhs.net">information.standards@nhs.net</a> with "NHS Data Model and Dictionary - Archive Request" in the email subject line.	None	None	Field size extended to future proof for <a href="#">ODS ORGANISATION SITE CODE</a> changes

INFORMATION SHARING TO TACKLE VIOLENCE DATA SET XML SCHEMA CONSTRAINTS (RETIRED), renamed from INFORMATION SHARING TO TACKLE VIOLENCE DATA SET XML SCHEMA CONSTRAINTS

Change to XML Schema Constraint: Changed Name, status to Retired, Description

- Changed Name from Data\_Dictionary.Messages.Message\_Documentation.XML\_Schema\_Constraints.Information\_Sharing\_to\_Tackle\_Violence\_Data\_Set\_XML\_Schema\_Constraints to Retired.Data\_Dictionary.Messages.Message\_Documentation.Information\_Sharing\_to\_Tackle\_Violence\_Data\_Set\_XML\_Schema\_Constraints
- Retired Information Sharing to Tackle Violence Data Set XML Schema Constraints
- Changed Description

For enquiries about this Change Request, please email [information.standards@nhs.net](mailto:information.standards@nhs.net)

